

# Eastern Globe

[www.easternglobe.in](http://www.easternglobe.in)

**JOURNEY WITH PURPOSE**

**BERRIES, BEAUTY & BEYOND: A FRESH TOURISM EXPERIENCE**

Strawberry Village: North Bengal's Rising Agri-Tourism Gem | Matigara-Patiramjote



I am thrilled to share with you an exciting milestone in Eastern Globe's journey. This month, we are proud to showcase the product, designed to exemplify our commitment to innovation, quality, and the exceptional experiences that our clients and guests have come to expect.

At Eastern Globe, our vision has always been to combine creativity with practical solutions that make a meaningful impact. This new product is a reflection of that vision—meticulously crafted to meet the evolving needs of our clients while setting a new standard in our industry. We are confident that it will not only enhance your experience but also open new opportunities for collaboration and engagement.

As we showcase this product to our valued guests, we are reminded that every achievement at Eastern Globe is the result of teamwork, dedication, and a shared passion for excellence. I encourage our team to take pride in this launch, to communicate its unique value confidently, and to continue striving for innovation in every project we undertake.

I look forward to seeing how this new offering enriches the experiences of our guests and strengthens Eastern Globe's position as a leader in the industry.

Thank you for your continued support and trust in our vision.

Together, we are shaping the future of Eastern Globe—one innovation at a time.



**Sarita Devi Saha**  
Founder & Owner

# STRAWBERRY VILLAGE

## Matigara–Patiramjote , North Bengal

Strawberry Village in Matigara–Patiramjote has quickly become one of North Bengal's most vibrant agri-tourism attractions. Set amidst lush farmlands and a climate ideal for berry cultivation, the village offers visitors an immersive blend of farming, learning, and rural leisure. The concept and development model were designed by the Centre of Floriculture and Agri-Business Management (COFAM), University of North Bengal.

### ◆ A Thriving Horticulture Belt

Surrounded by over 100 ornamental and landscape nurseries, the area stands as one of the largest horticulture clusters in the region, adding to its scenic charm and tourism appeal.

### ◆ Led by Young Progressive Farmers

The initiative was started by two dynamic farmers, Shri Shukumar Mallik and Shri Vidya Sagar Vyapari. Their success has encouraged 10–15 more farmers in the village to adopt strawberry cultivation, creating a flourishing farming community.



### ◆ A Favourite Among Tourists

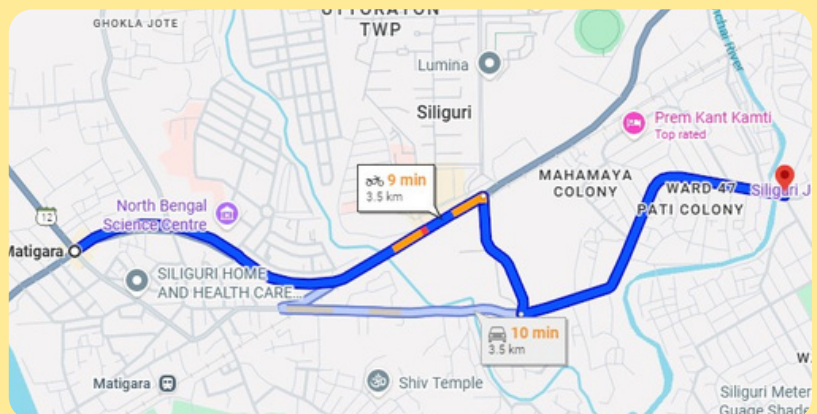
During the peak season, Strawberry Village attracts more than a thousand visitors. The popular “pick-your-own” experience—where tourists pluck fresh strawberries straight from the fields—has become its signature attraction. Families from Siliguri and across North Bengal frequent the village on weekends. Clean air, open landscapes, hands-on farm learning, and the joy of tasting freshly harvested strawberries make it an ideal family outing.

### ◆ Rohini, Kurseong: A New Strawberry Hotspot

Rohini in the Kurseong subdivision is also emerging as a promising strawberry destination. Its cool climate and picturesque hills are drawing both cultivators and tourists, strengthening the region's agri-tourism ecosystem.

## How to Reach

- **By Rail:** Matigara Railway Station is the nearest point to Patiramjote.
- **By Road:** Patiramjote is well connected to Siliguri and Matigara via local roads.
- **Public Transport:** Regular buses and autos operate between Siliguri, Matigara, and Patiramjote.



# TIMILO BOUTIQUE

Where Handcrafted Luxury Meets Nature's Soul

Perched amidst the tranquil hills of Tawang, Arunachal Pradesh, **Timilo Boutique** is inspired by the sacred "Timi-Phu" grove of the Monpa tribe — a revered symbol of the deep bond between nature and spirit. Every detail here echoes that harmony: from reclaimed Indian mahogany salvaged after the 1950 Siang Valley earthquake to handwoven Malaysian cane furniture that celebrates artistry, sustainability, and warmth.

Proud recipient of the **Best Boutique Hotel Award** at the North East Tourism Awards, Timilo embodies craftsmanship, culture, and comfort in perfect balance. Guests are welcomed into spacious, mountain-view rooms equipped with modern heated amenities, while the in-house multi-cuisine restaurant delights with local Monpa flavors and global favorites alike. Personalized service and genuine hospitality ensure that every visitor feels not like a guest — but a part of the Timilo family.



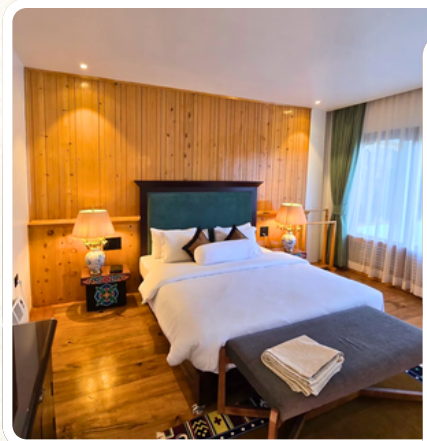
## ◆ Room Categories:

Timilo Classic | Timilo Royal

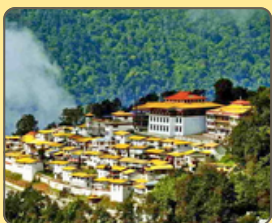
## ◆ Location:

Above Choepelling Public School,  
Tawang, Arunachal Pradesh

At **Timilo Boutique**, each stay becomes a story — a serene encounter where handcrafted luxury meets the pure embrace of nature.



## Nearby attractions to Visit



Tawang Monastery



Sela Pass



Nuranang Falls



Madhuri Lake

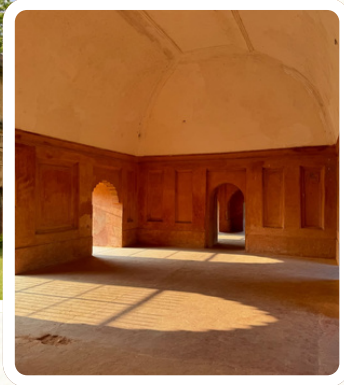
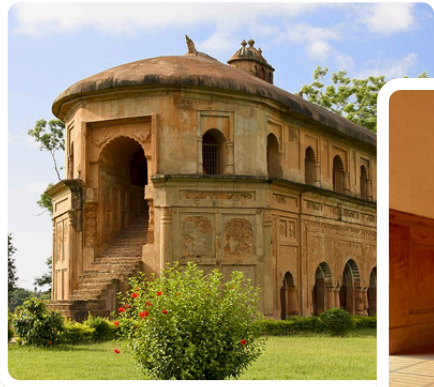


Bumla Pass

# RANG GHAR – THE ROYAL PAVILION OF ASSAM

## OVERVIEW

- Rang Ghar (meaning “House of Entertainment” in Assamese) is a two-storeyed royal pavilion built by the Ahom kings.
- Served as the royal gallery for watching traditional games, buffalo fights, and cultural performances during Rongali Bihu.
- Located about 3 km from Sivasagar town, near the Rangpur Palace complex (Talatal Ghar and Kareng Ghar).



## HISTORICAL BACKGROUND

- Originally built with bamboo and wood by Swargadeo Rudra Singha.
- Reconstructed with bricks by Swargadeo Pramatta Singha between 1744–1751 A.D.
- Known as the “Colosseum of the East”, it is one of the oldest surviving amphitheatres in Asia.

## ARCHITECTURAL FEATURES

- Two-storeyed oval-shaped structure made of baked bricks, rice powder, duck eggs, and Bora Saul (sticky rice).
- Combines Mughal and indigenous Assamese architectural styles.
- Roof shaped like an Ahom longboat, decorated with crocodile motifs and floral designs.
- Upper gallery served as the royal viewing area overlooking the playground (Rupahi Pathar).

## CULTURAL SIGNIFICANCE

- Venue for royal entertainment, festivals, and public gatherings.
- Symbolized unity, celebration, and royal grandeur in the Ahom era.
- Embodies Assam’s cultural spirit of art, joy, and tradition.

## Nearby attractions to visit



Talatal Ghar



Kareng Ghar



Sivasagar Sivadol



Sivasagar Tank  
(Borpukhuri)



Joysagar Tank  
and Temples



Gaurisagar Tank  
and Temples



Charaideo Maidams  
(Ahom Royal Tombs)



Ahom Museum



Namdang Stone  
Bridge



Jyomoti Konwari Memorial  
(Jerenga Pothar)

## OFFICE ADDRESS

### REGISTERED OFFICE:

4E, 4TH FLOOR, PEACE ENCLAVE,  
SOUTH SARANIA, MANIPURI  
RAJBARI, ULUBARI, GUWAHATI,  
ASSAM 781007

+91-9365048363

### CORPORATE OFFICE

7TH FLOOR, C/O HQ, RUDRAKSH MALL, GS RD,  
BHANGAGARH, GUWAHATI, ASSAM 781005

+91 9365048363 | +91 7099077892

Website: [www.easternglobe.in](http://www.easternglobe.in)

### ASSOCIATE OFFICE

C-6/6353 VASANT KUNJ,  
New Delhi 110070

+91 9365048363 | +91 9810362445

SCAN ME:

